

STOP PRESS

AT THE GENERAL ELECTION IN KENILWORTH AND SOUTHAM YOU HAVE A CLEAR CHOICE

WHO CAN BEAT THE CONSERVATIVES?

SEE INSIDE >>>>>>

Published and promoted by Rachel Norwood on behalf of Jenny Wilkinson (Liberal Democrat) all at 3 Barrow Road, Kenilworth, CV8 1EG. Printed by Solopress, 9 Stock Road, Southend-on-Sea, Essex, SS2 5QF.

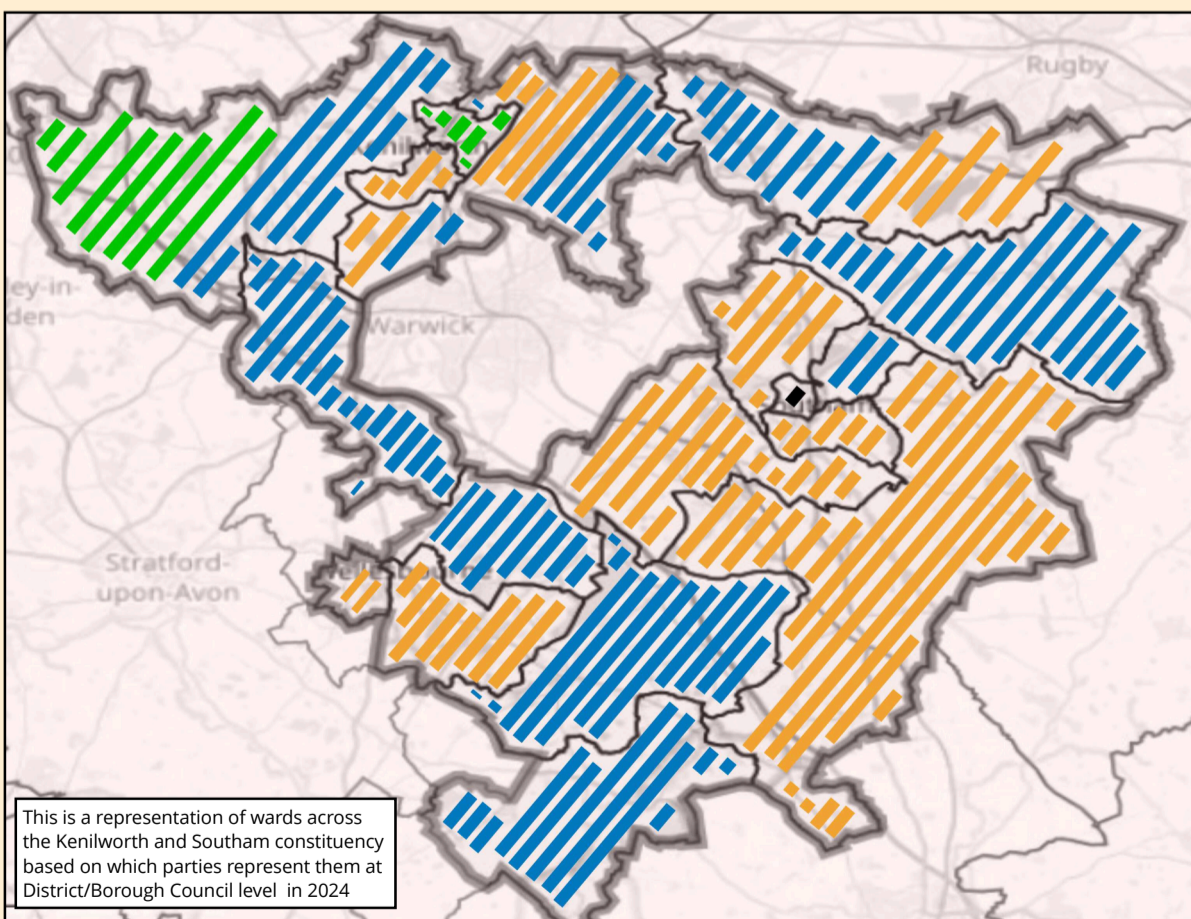
THE LIB DEMS ARE ON THE UP

ONLY THE LIB DEMS CAN CHALLENGE THE CONSERVATIVES ACROSS ALL OUR AREA

Support for the Lib Dems is on the rise across Kenilworth and Southam.

After the Dunsmore by-election in December 2023, across the constituency, the Lib Dems are now level pegging with the Conservatives in terms of numbers of District/Borough Councillors, both with 12.

More and more people are sick of being taken for granted by the Conservative Government and are switching to back the Liberal Democrats in our area.



KENILWORTH & SOUTHAM

GAZETTE

Covering Kenilworth and Southam Constituency. Free leaflet paid for by the Liberal Democrats and delivered by the Royal Mail.

LIB DEMS WIN BY-ELECTION ON MASSIVE SWING!
FIND OUT MORE INSIDE

IT'S SO CLOSE HERE

CON 38%	LIB DEM 31%	GRN 18%	LAB 9%
---------	-------------	---------	--------

Local election results across Kenilworth and Southam constituency, May 2023. SEE BACK PAGE

In the race to be Kenilworth & Southam's new MP this year...

JENNY SETS THE PACE...

JENNY'S POSITIVE PLAN - SEE OVER

TIME FOR CHANGE!

Jenny Wilkinson is leading the fight for a better deal for Kenilworth and Southam residents.

 **PROTECTING OUR LOCAL ENVIROMENT**

 **ENDING THE NEGLECT OF OUR NHS**

 **TACKLING THE COST OF LIVING CRISIS**



People in Kenilworth and Southam have been ignored and taken for granted by the Conservatives for too long.

The Government has made life more difficult and more expensive for people. Our Conservative MP spends one day a week working as a lawyer, leaving less time for his role as our MP

The next General Election is our chance to send a message that **enough is enough**. A vote for the Lib Dems is a vote for a fresh start.

IT'S NOW OR NEVER

LIB DEMS WIN BY-ELECTION

Labour come third and Greens a distant fourth

The recent by-election in Dunsmore saw the Lib Dems top the polls with voters choosing them over both Labour and the Greens.

The momentum is with the Lib Dems, who won one of the available seats with 613 votes, beating the Conservatives on 557. Labour and the Greens were left behind with 299 and 145 votes respectively .



HELP JENNY FIGHT FOR KENILWORTH AND SOUTHAM

Our area has been let down by the Conservatives for too long. Volunteer today to help us get a better deal for Kenilworth and Southam.

Name:

House No: Post Code:

Email:

Telephone:

Can we keep you updated on Lib Dem campaigns and activities? Yes No

- I want to donate to the Lib Dems
- I will put up a poster at election time
- I will help deliver leaflets in my area
- I want to join the Liberal Democrats

Return this for free by putting it in an envelope addressed to:

WARWICK DISTRICT LIBERAL DEMOCRATS

The Liberal Democrats may use the information you provide, including your political opinions, to further our objectives and share it with our elected representatives. Any data we gather will be used in accordance with our privacy policy: libdems.org.uk/privacy. You can exercise your rights and withdraw your consent to future communications by contacting us: data.protection@libdems.org.uk or: DPO, Lib Dems, 1 Vincent Square, SW1P 2PN. Published and promoted by Rachel Norwood on behalf of Jenny Wilkinson (Liberal Democrat) all at 3 Barrow Road, Kenilworth, CV8 1EG. Printed by Solopress, 9 Stock Road, Southend-on-Sea, Essex, SS2 5QF.